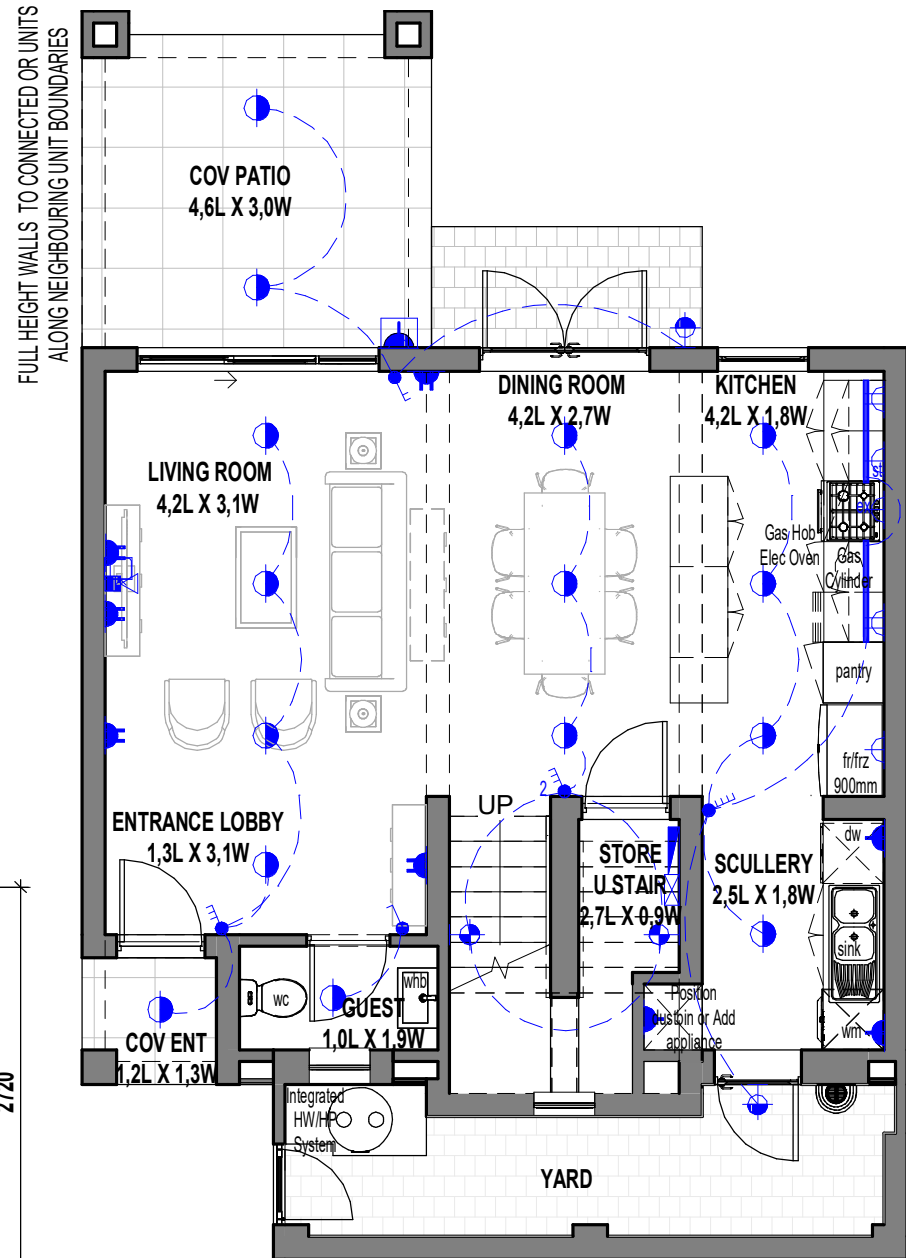
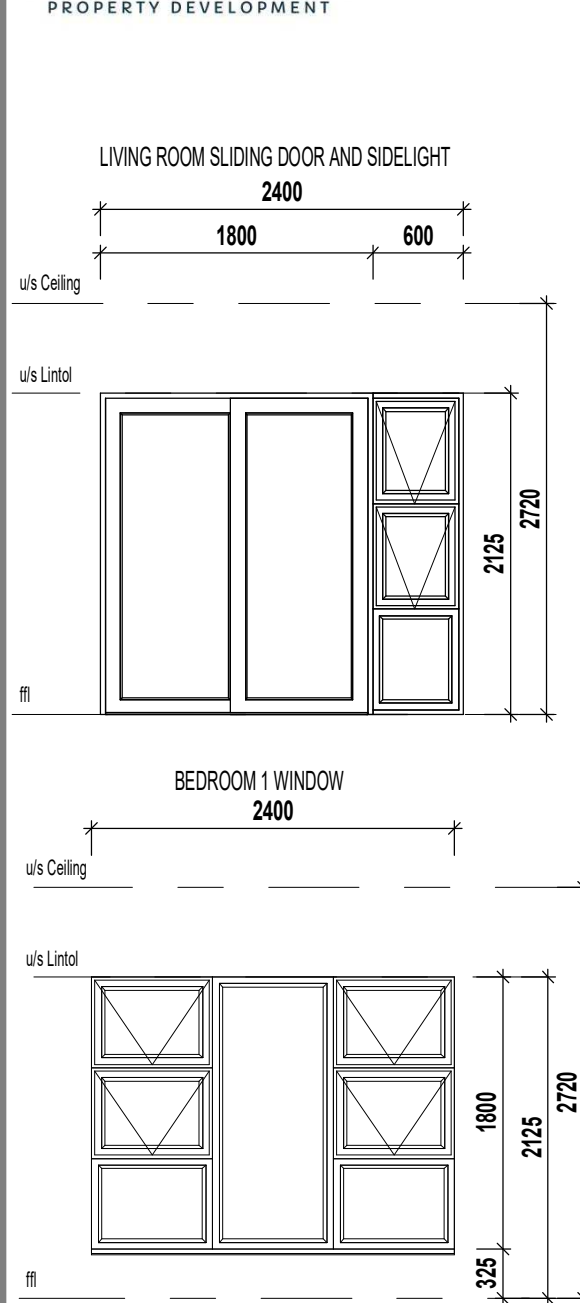
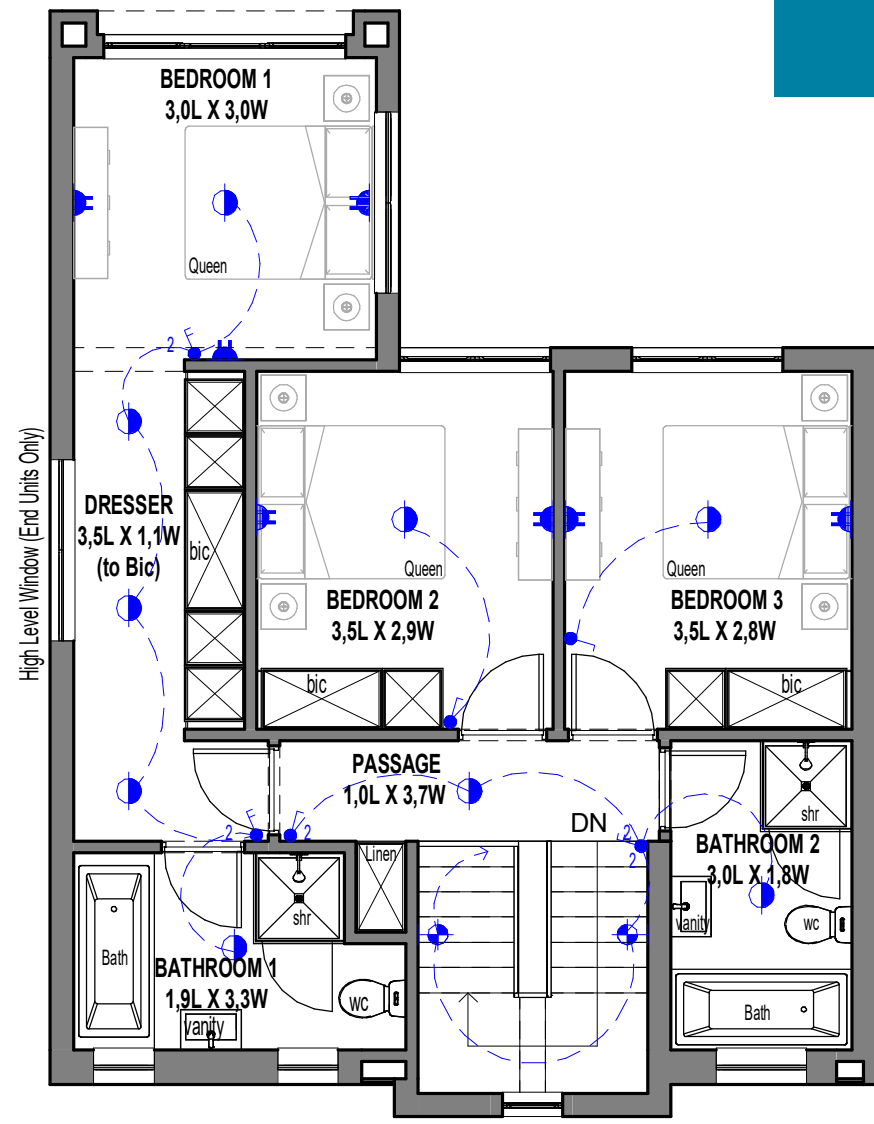


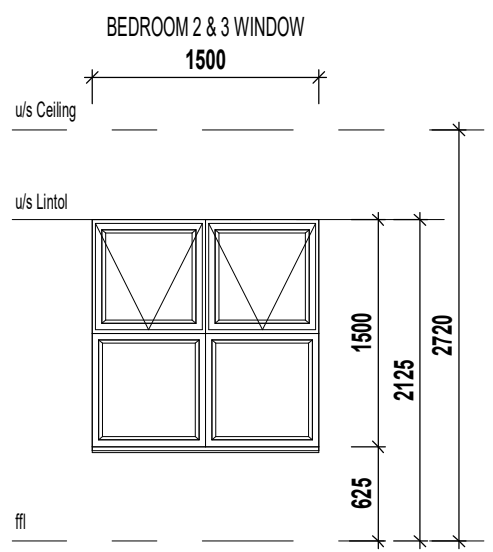
ANNEXURE C FLOOR PLAN



GROUND FLOOR PLAN



1ST FLOOR PLAN



Duplex 3 Bedroom - 2,5 Bathroom

SCALE 1:75

F2

ELECTRICAL LEGEND

- Surface Mounted LED Fitting
- External Wall Mounted LED Light Fitting
- LED Strip Light Fitting (u/s - Eye levels - Kitchen)
- Single Light Switch
- Double Light Switch
- Triple Light Switch
- Four - Light Switch
- Two-Way Light Switch
- Single Plug Point (300mm Above FFL)
- Double Plug Point (300mm Above FFL)
- Single Plug Point (150mm Above Counter)
- Double Plug Point (150mm Above Counter)
- External Single Socket Plug Point
- Stove Isolator (Above Counter)
- Extractor Plug (High Level)
- Distribution Board
- TV Point
- Fibre / Data Point

AREA	
TYPE F2	
Ground Floor	59.00 m ²
1st Floor	71.44 m ²
Cov Patio	10.99 m ²
Cov Ent	1.67 m ²
Total Unit	143.10 m²

* The areas are approximate and shall vary from the areas reflected on the sectional title plan