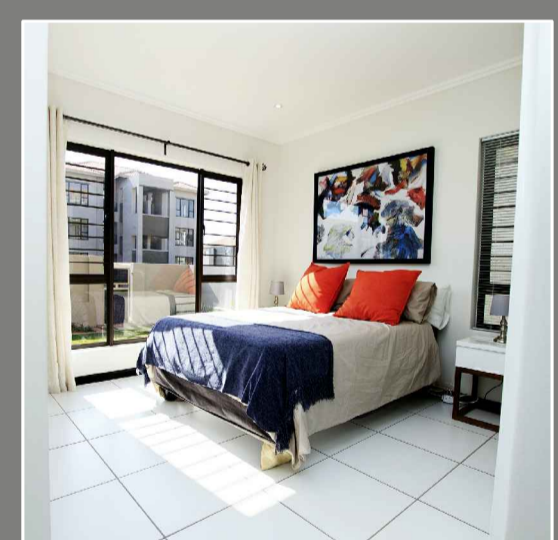
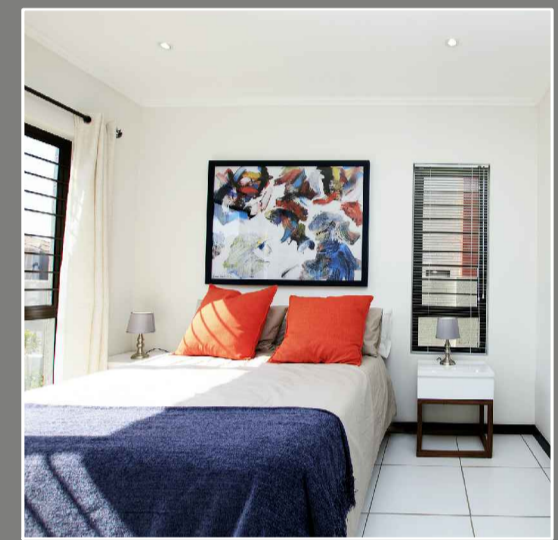
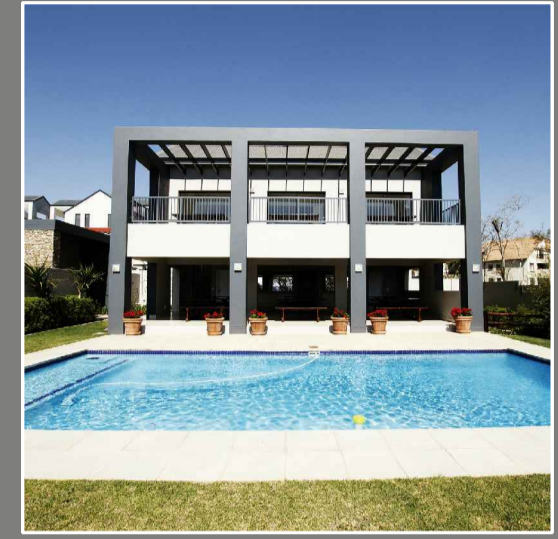


ANNEXURE C



3 Bedrooms - 2 Bathrooms

Revision 4 - 09/02/2018

Type E1

Unit	89.3 m ²
Covered Patio	8.8m ²
Total	98.1 m²



ELECTRICAL LEGEND

- DOUBLE 15AMP SOCKET 300mm ABOVE FFL
- DOUBLE 15AMP SOCKET 1050mm ABOVE FFL
- SINGLE 15AMP SOCKET 1050mm ABOVE FFL
- SINGLE 15AMP SOCKET FOR EXTRACTOR FAN
- SINGLE 15AMP SOCKET FOR MICROWAVE
- SWITCH
- FIBRE POINT
- TELEVISION POINT
- STOVE ISOLATOR
- LED DOWN LIGHT
- 220V CEILING MOUNTED LIGHT
- DISTRIBUTION BOARD



* The areas are approximate and shall vary from the areas reflected on the sectional title plan.