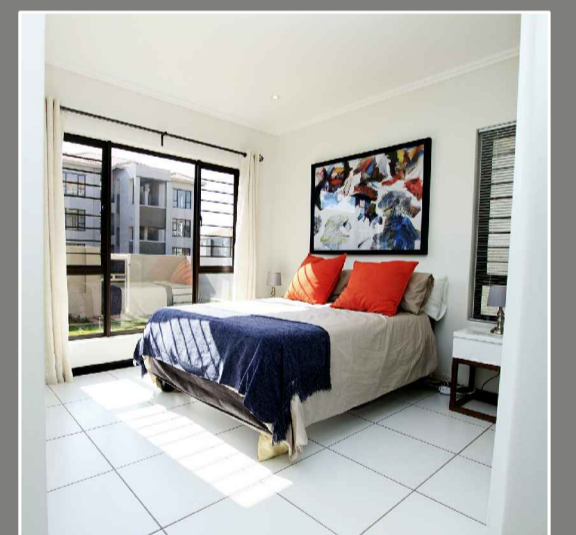
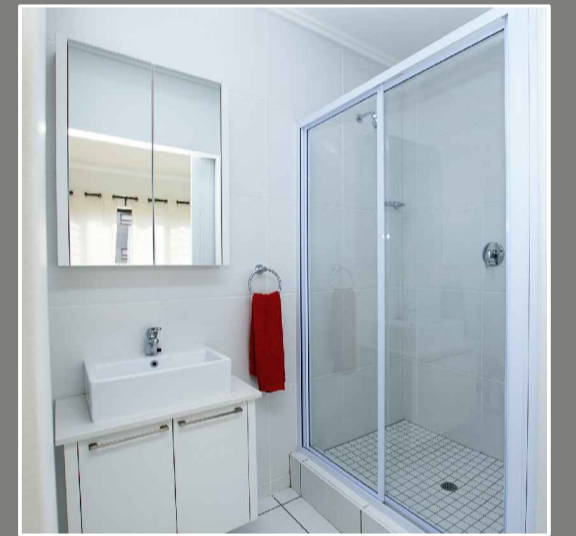
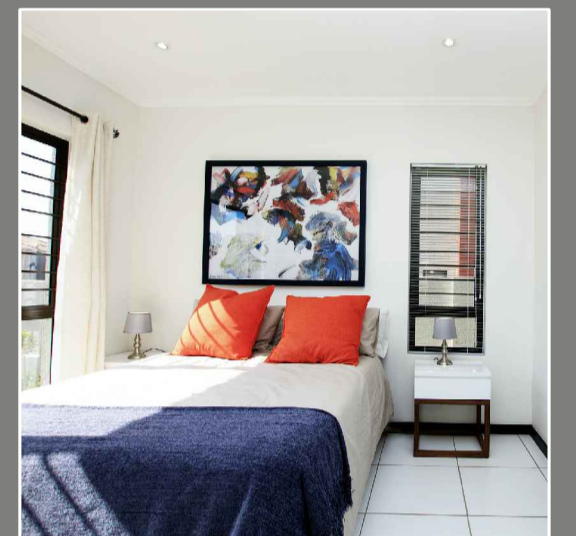
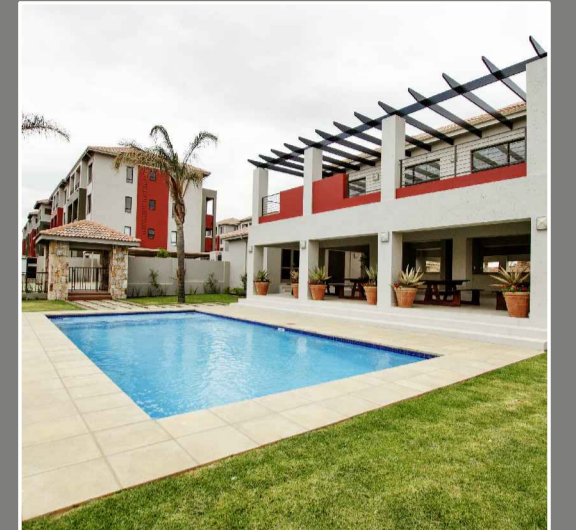


# ANNEXURE C



3 Bedrooms - 2 Bathrooms

Revision 4 - 31/05/2018

Type E1

Unit	88.7 m <sup>2</sup>
Covered Patio	8.1 m <sup>2</sup>
<b>Total</b>	<b>96.8 m<sup>2</sup></b>



## ELECTRICAL LEGEND

- |  |                                       |  |                            |
|--|---------------------------------------|--|----------------------------|
|  | DOUBLE 15AMP SOCKET 300mm ABOVE FFL   |  | INTERCOM                   |
|  | DOUBLE 15AMP SOCKET 1050mm ABOVE FFL  |  | FIBRE POINT                |
|  | SINGLE 15AMP SOCKET 1050mm ABOVE FFL  |  | TELEVISION POINT           |
|  | SINGLE 15AMP SOCKET FOR EXTRACTOR FAN |  | STOVE ISOLATOR             |
|  | SINGLE 15AMP SOCKET FOR MICROWAVE     |  | LED DOWN LIGHT             |
|  | SWITCH                                |  | 220V CEILING MOUNTED LIGHT |
|  |                                       |  | DISTRIBUTION BOARD         |



\* The areas are approximate and shall vary from the areas reflected on the sectional title plan.