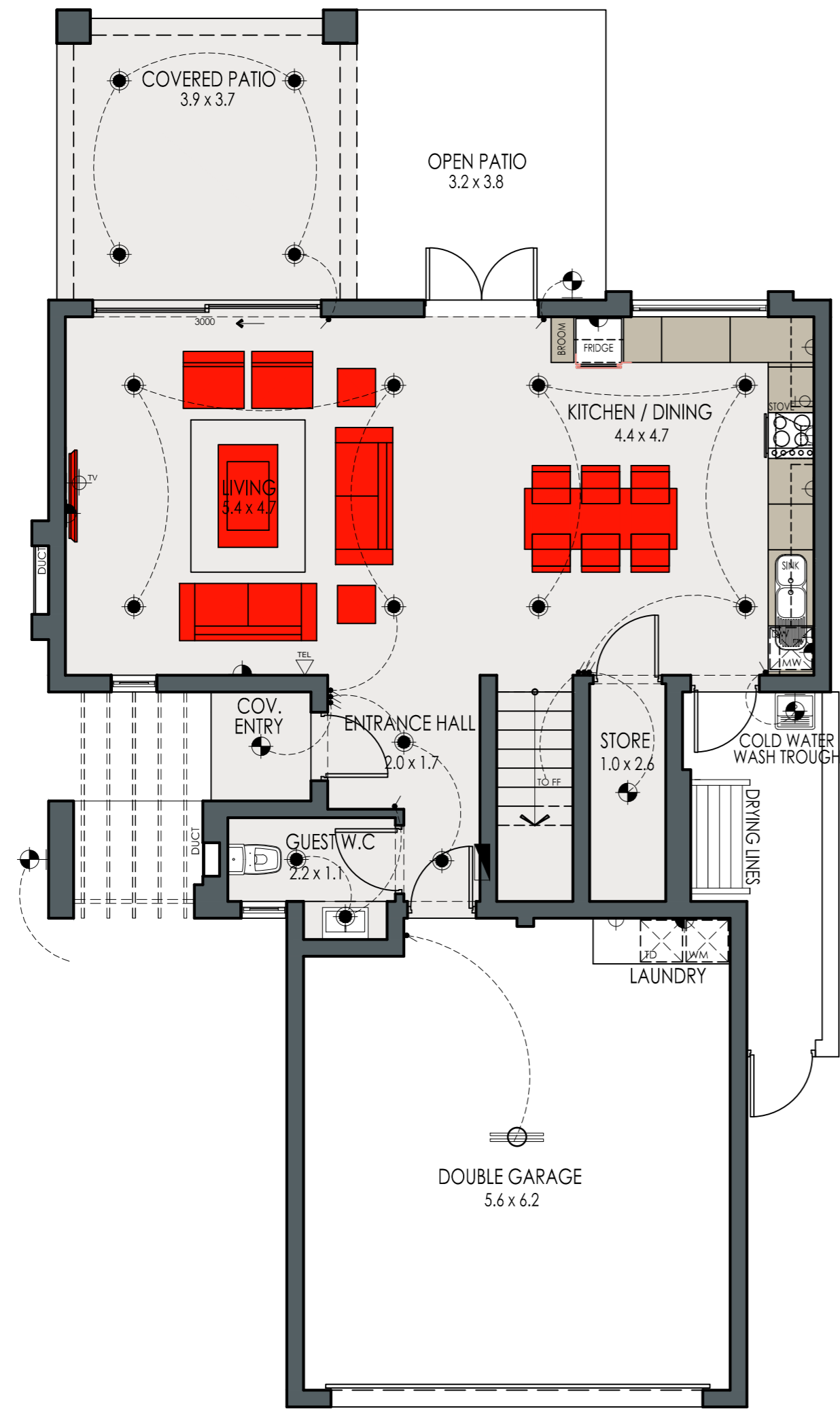
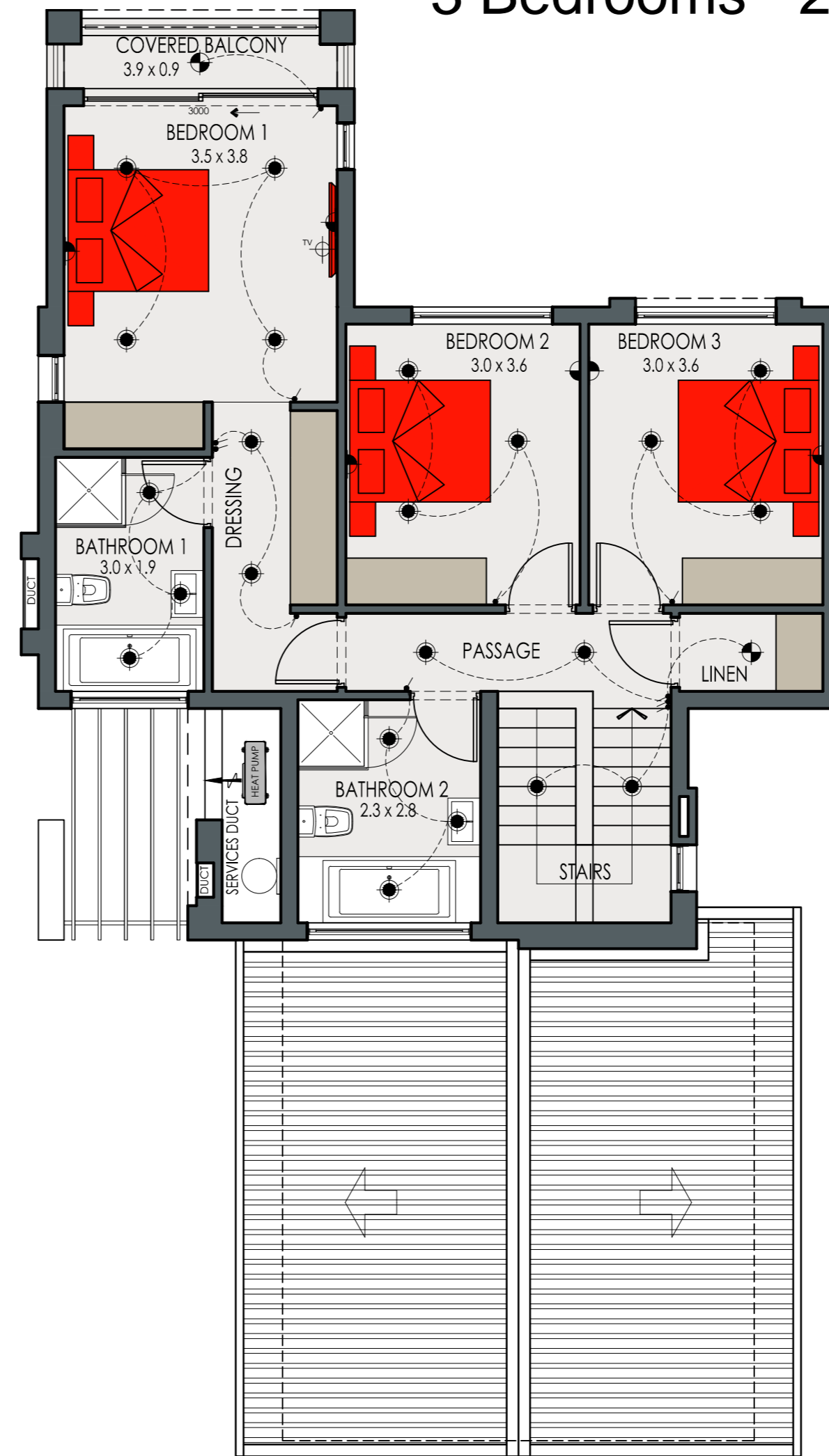


ANNEXURE C



3 Bedrooms - 2 Bathrooms



Ground Floor

Unit	69.4 m ²
Covered Patio	14.7 m ²
Covered Ent.	1.9 m ²
Garage	39.4 m ²
Open Patio	12.4 m ²

Sub-Total 137.8 m²

First Floor

Unit	79.9 m ²
Balcony	3.6 m ²
Sub-Total	83.5 m ²
Total	221.3 m²

Revision 8 - 22/11/2016



ELECTRICAL LEGEND

- | | | | |
|--|---------------------------------------|--|----------------------------|
| | DOUBLE 15AMP SOCKET 300mm ABOVE FFL | | INTERCOM |
| | DOUBLE 15AMP SOCKET 1050mm ABOVE FFL | | TELEPHONE POINT |
| | SINGLE 15AMP SOCKET 1050mm ABOVE FFL | | TELEVISION POINT |
| | SINGLE 15AMP SOCKET FOR EXTRACTOR FAN | | STOVE ISOLATOR |
| | 2 WAY SWITCH | | LED DOWN LIGHT |
| | SWITCH | | 220V CEILING MOUNTED LIGHT |
| | | | DISTRIBUTION BOARD |

* The areas are approximate and shall vary from the areas reflected on the sectional title plan.

