



Upper Floor	
Unit	107.3 m ²
Open Balcony	10.6 m ²
Open Balcony	3.8 m ²
Garage	35.8 m ²
Sub-Total	157.5 m²
Loft	
Loft	19.6 m ²
Terrace	23.5 m ²
Sub-Total	43.1 m²
Total	200.6 m²

3 Bedrooms - 2 Bathrooms - Loft

Revision 5 - 08/11/2016

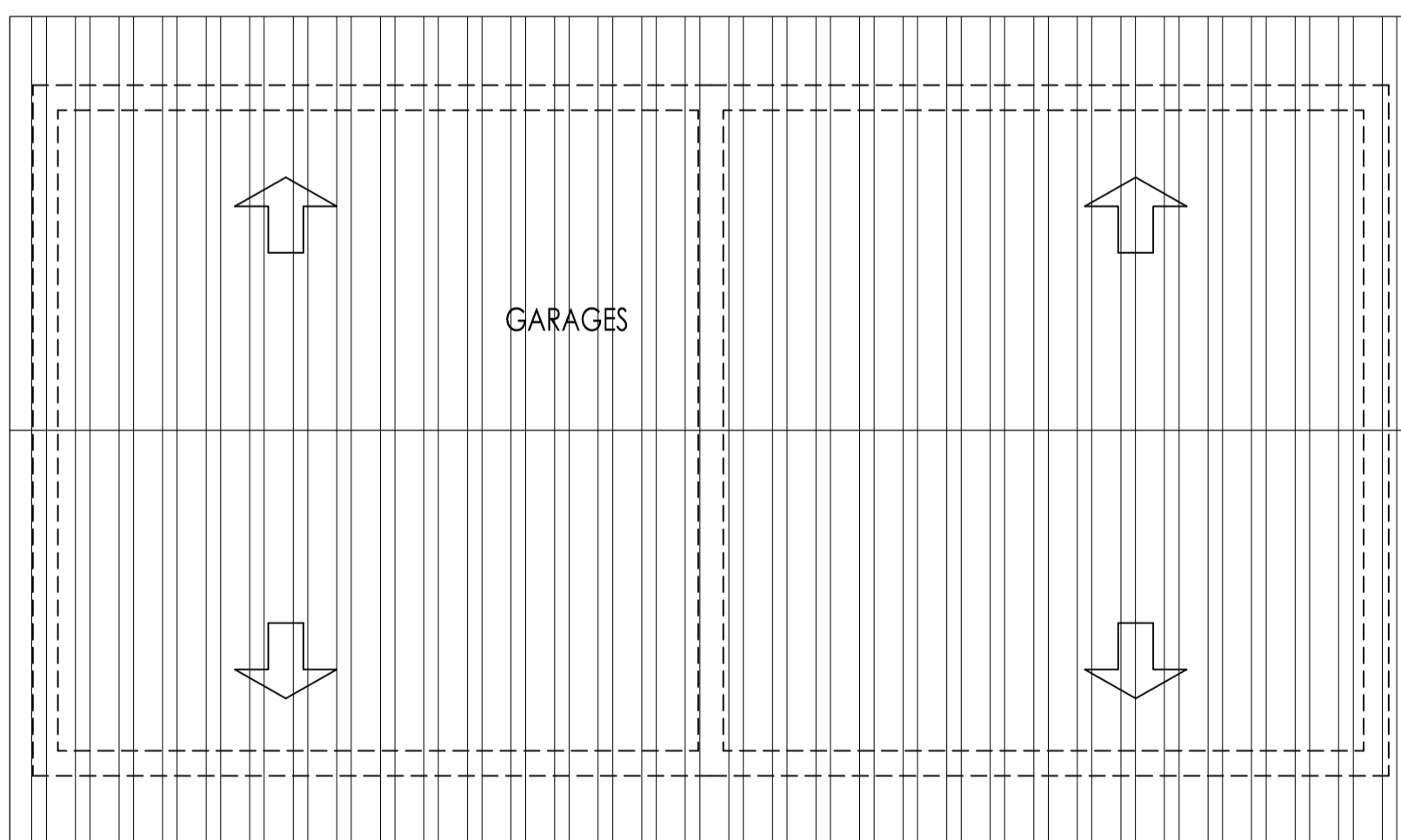
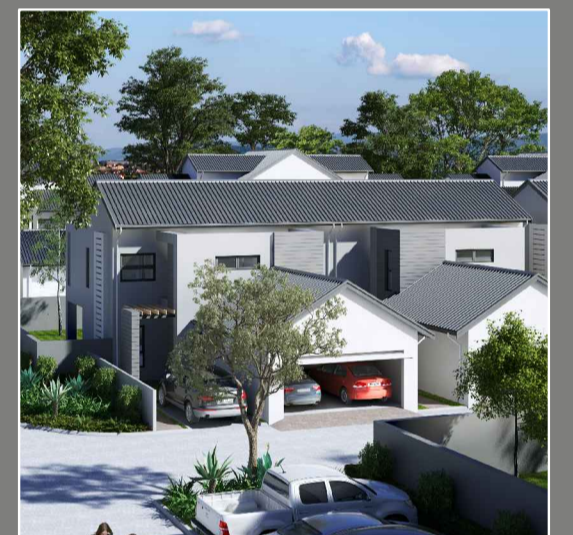
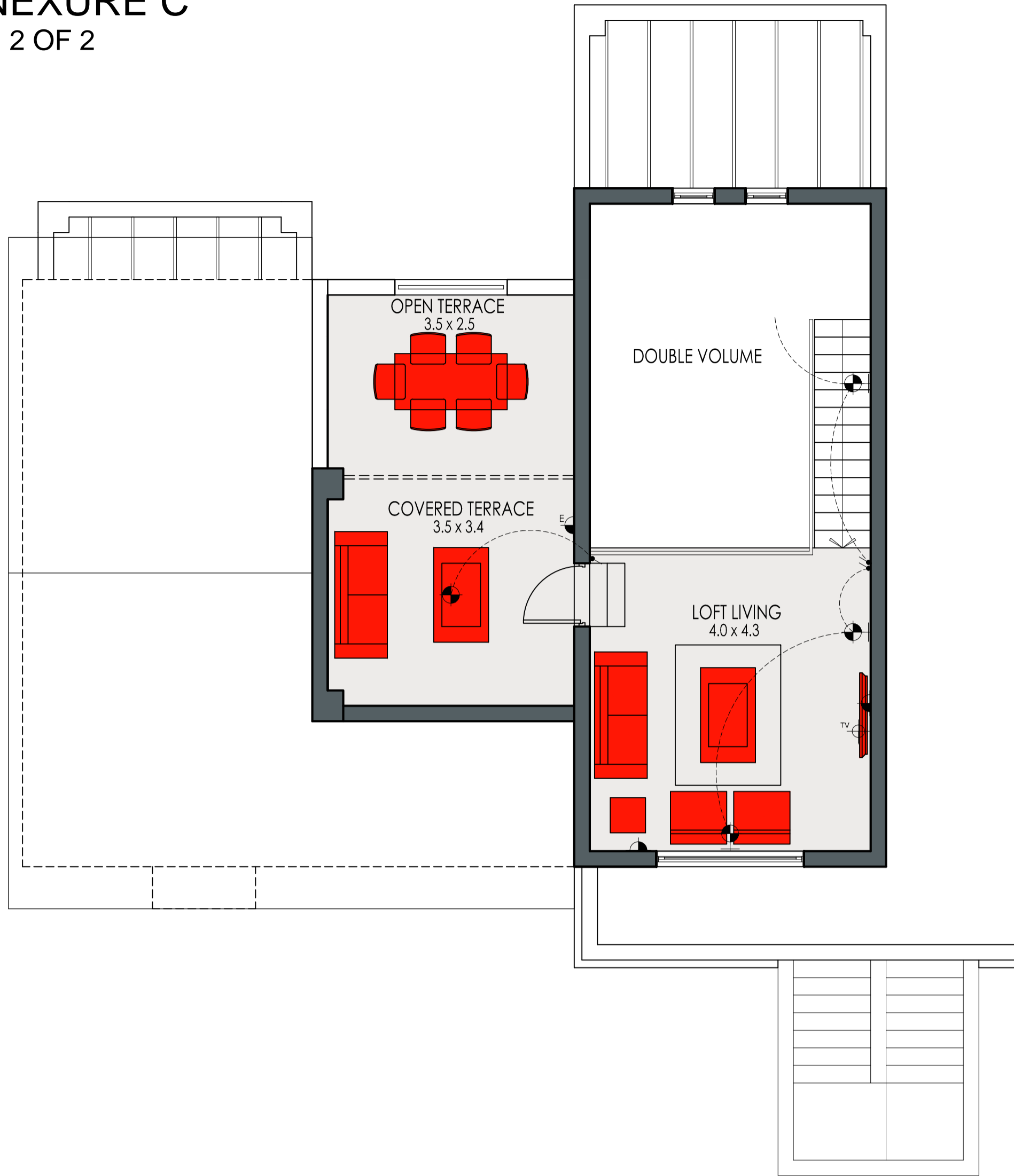
E2

ELECTRICAL LEGEND

- DOUBLE 15AMP SOCKET 300mm ABOVE FFL
- DOUBLE 15AMP SOCKET 1050mm ABOVE FFL
- SINGLE 15AMP SOCKET 1050mm ABOVE FFL
- SINGLE 15AMP SOCKET FOR EXTRACTOR FAN
- 2 WAY SWITCH
- SWITCH
- INT INTERCOM
- TEL TELEPHONE POINT
- TV TELEVISION POINT
- I+ STOVE ISOLATOR
- LED DOWN LIGHT
- 220V CEILING MOUNTED LIGHT
- DISTRIBUTION BOARD



* The areas are approximate and shall vary from the areas reflected on the sectional title plan.



Upper Floor

Unit	107.3 m ²
Open Balcony	10.6 m ²
Open Balcony	3.8 m ²
Garage	35.8 m ²

Sub-Total 157.5 m²

Loft

Loft	19.6 m ²
Terrace	23.5 m ²

Sub-Total 43.1 m²

Total 200.6 m²

3 Bedrooms - 2 Bathrooms - Loft

Revision 5 - 08/11/2016

ELECTRICAL LEGEND

- DOUBLE 15AMP SOCKET 300mm ABOVE FFL
- DOUBLE 15AMP SOCKET 1050mm ABOVE FFL
- SINGLE 15AMP SOCKET 1050mm ABOVE FFL
- SINGLE 15AMP SOCKET FOR EXTRACTOR FAN
- 2 WAY SWITCH
- SWITCH
- INTERCOM
- TELEPHONE POINT
- TELEVISION POINT
- STOVE ISOLATOR
- LED DOWN LIGHT
- 220V CEILING MOUNTED LIGHT
- DISTRIBUTION BOARD

E2



* The areas are approximate and shall vary from the areas reflected on the sectional title plan.