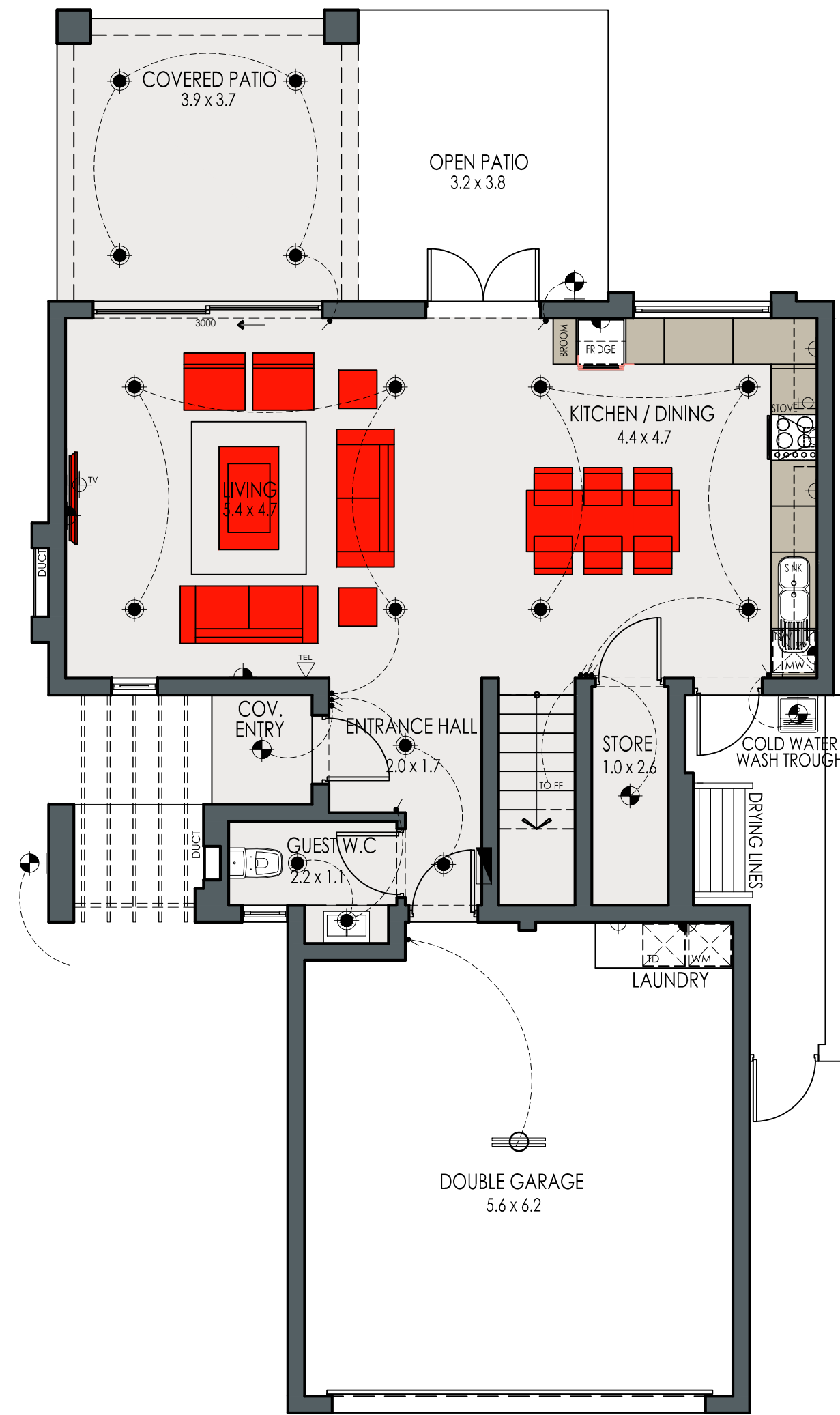
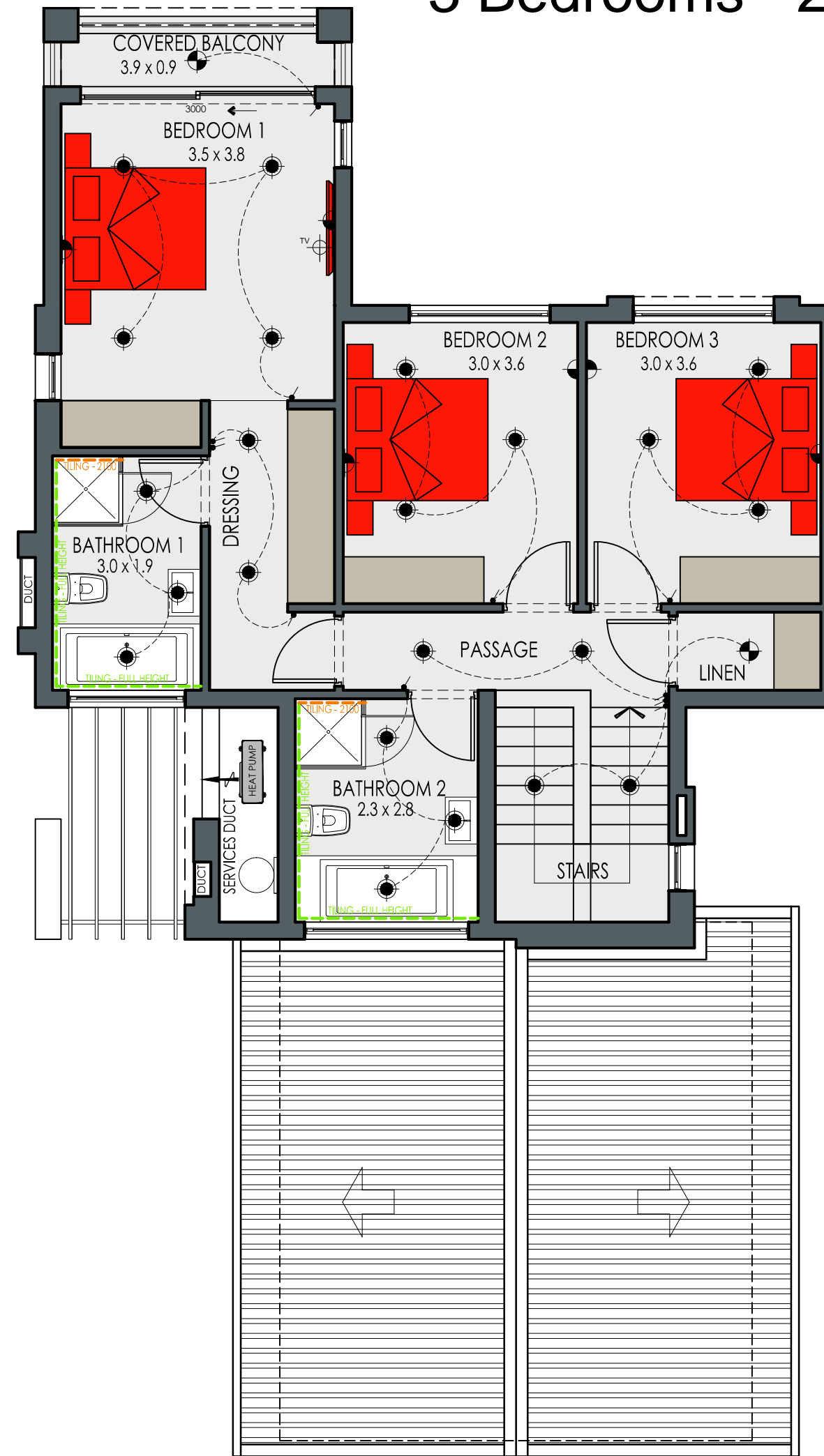


ANNEXURE C



3 Bedrooms - 2 Bathrooms



Generic	
Unit	69.4 m ²
Covered Patio	14.7 m ²
Covered Ent.	1.9 m ²
Garage	39.4 m ²
Open Patio	12.4 m ²
Sub-Total	137.8 m²
First Floor	
Unit	79.9 m ²
Balcony	3.6 m ²
Sub-Total	83.5 m²
Total	221.3 m²

Revision 1 - 30/11/2016



ELECTRICAL LEGEND

- DOUBLE 15AMP SOCKET 300mm ABOVE FFL
- DOUBLE 15AMP SOCKET 1050mm ABOVE FFL
- SINGLE 15AMP SOCKET 1050mm ABOVE FFL
- SINGLE 15AMP SOCKET FOR EXTRACTOR FAN
- 2 WAY SWITCH
- SWITCH
- INT INTERCOM
- TEL TELEPHONE POINT
- TV TELEVISION POINT
- STOVE ISOLATOR
- LED DOWN LIGHT
- 220V CEILING MOUNTED LIGHT
- DISTRIBUTION BOARD

* The areas are approximate and shall vary from the areas reflected on the sectional title plan.

