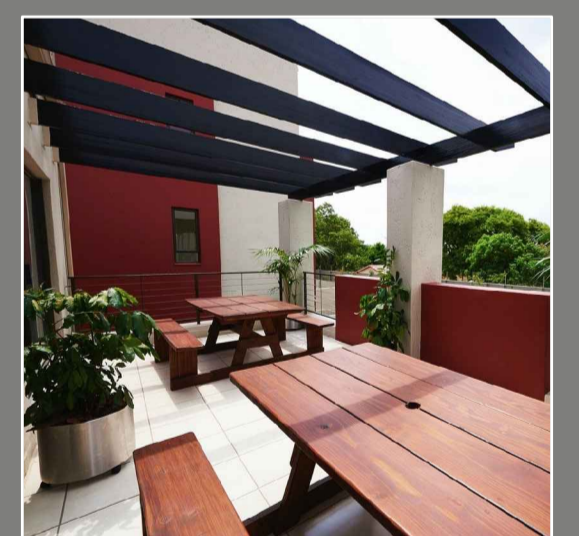
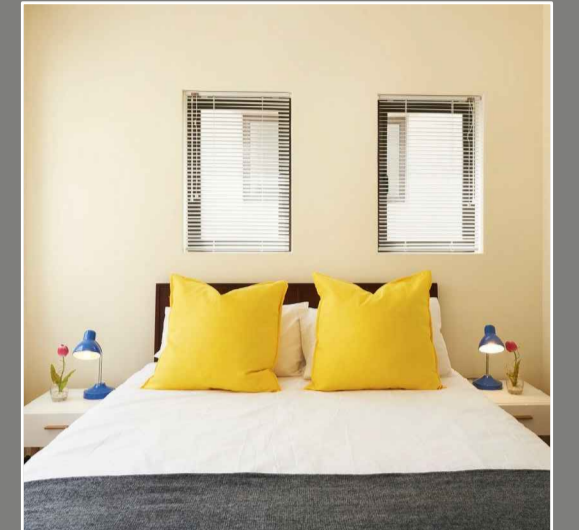


# ANNEXURE C



3 Bedrooms - 2 Bathrooms

Revision 5 - 04/11/2016

## Type E1

Unit	88.7 m <sup>2</sup>
Covered Patio	8.1 m <sup>2</sup>
<b>Total</b>	<b>96.8 m<sup>2</sup></b>



### ELECTRICAL LEGEND

- DOUBLE 15AMP SOCKET 300mm ABOVE FFL
- DOUBLE 15AMP SOCKET 1050mm ABOVE FFL
- SINGLE 15AMP SOCKET 1050mm ABOVE FFL
- SINGLE 15AMP SOCKET FOR EXTRACTOR FAN
- 2 WAY SWITCH
- SWITCH
- INT INTERCOM
- TEL TELEPHONE POINT
- TV TELEVISION POINT
- I+ STOVE ISOLATOR
- LED DOWN LIGHT
- 220V CEILING MOUNTED LIGHT
- DISTRIBUTION BOARD



\* The areas are approximate and shall vary from the areas reflected on the sectional title plan.